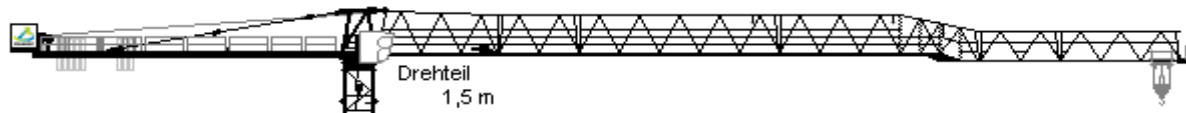


# WILBERT Turmkrane GmbH

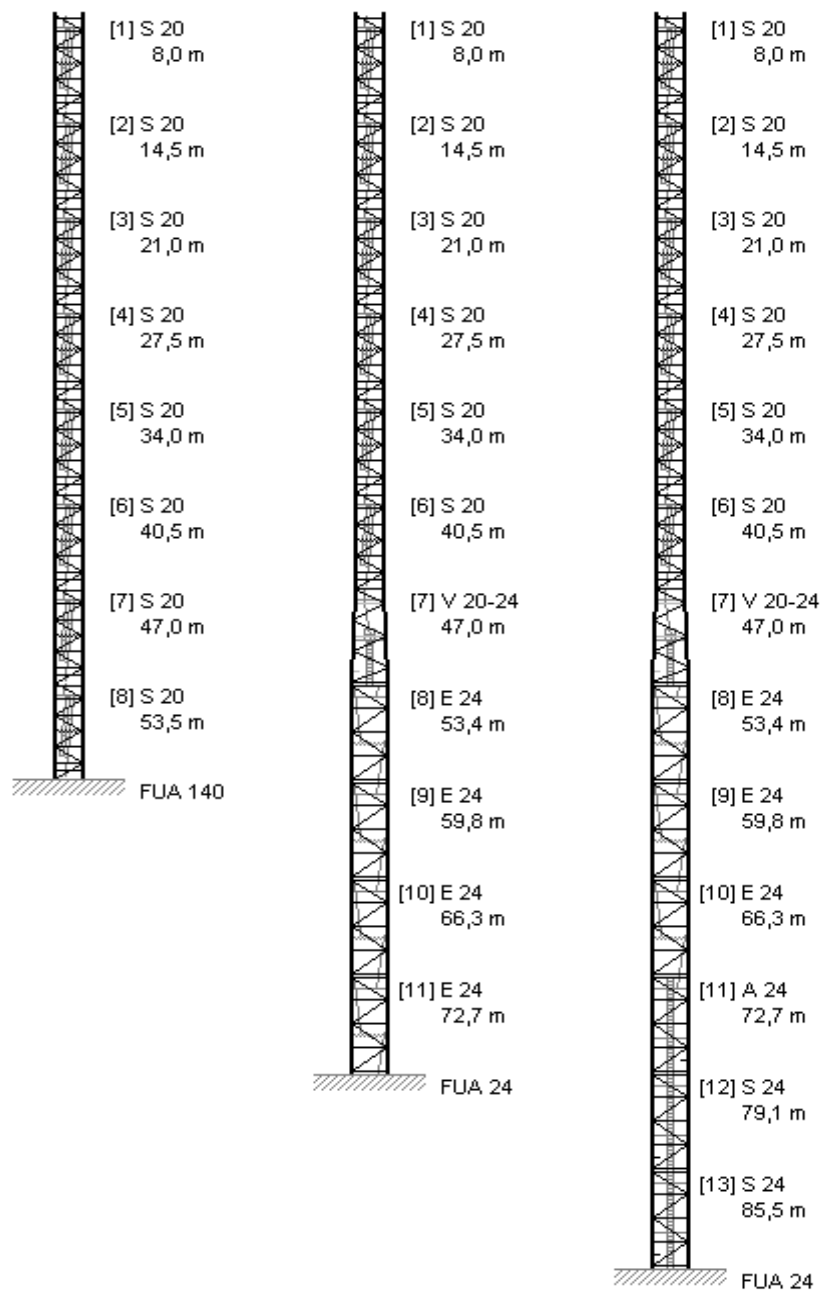


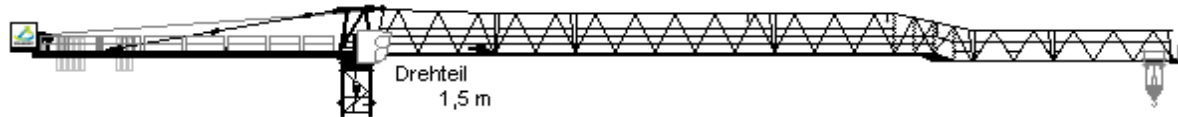
Krantyp: WT 420 *e.tronic*

Bezeichnung: Turmkombinationen / C25

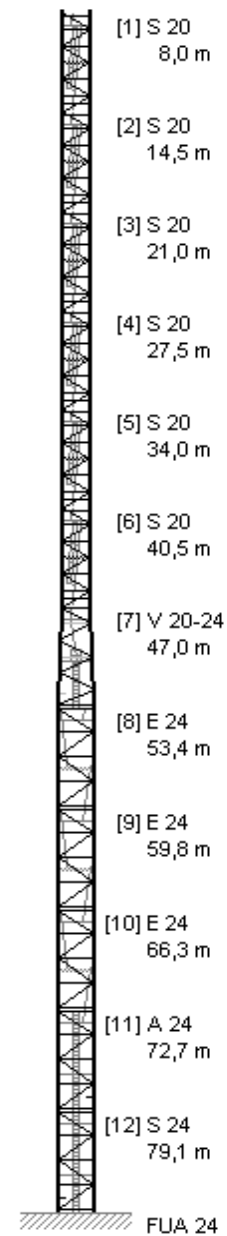
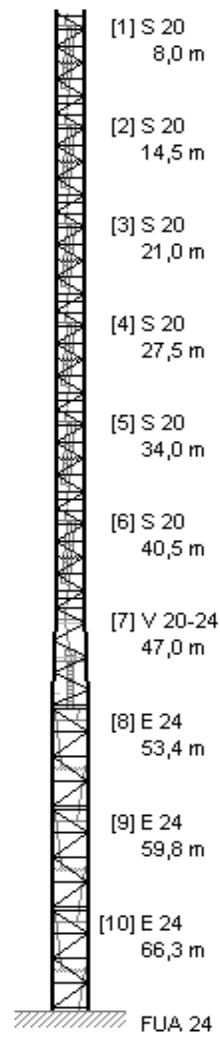
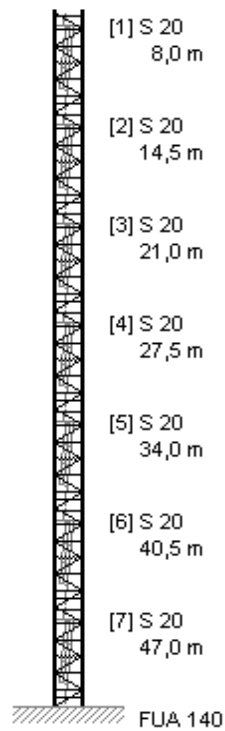


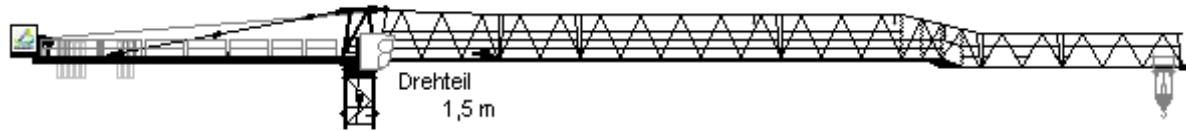
Auslegerlänge 25,0 - 82,5 m





Auslegerlänge 85,0 m

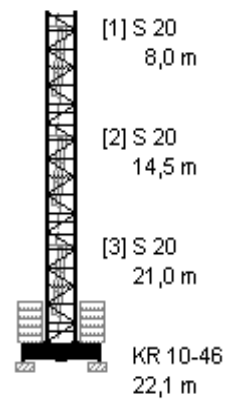
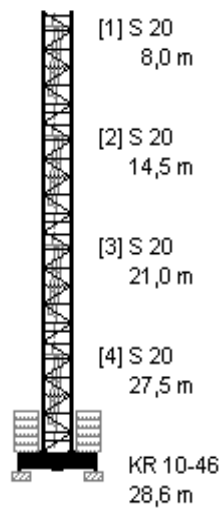
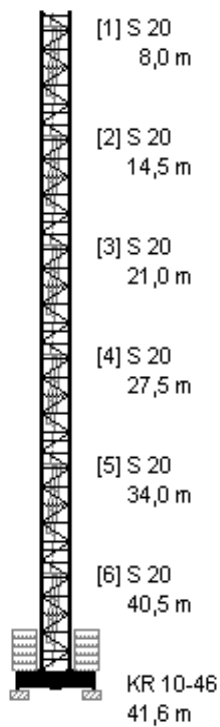




Auslegerlänge 25,0 - 77,5 m

Auslegerlänge 80,0 - 82,5 m

Auslegerlänge 85,0 m



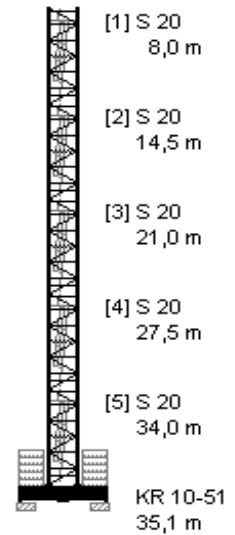
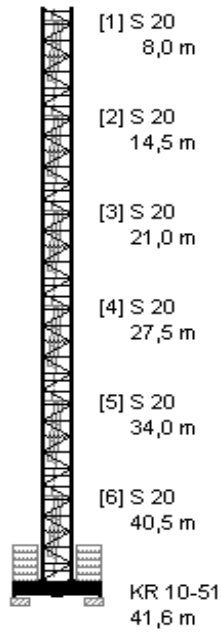
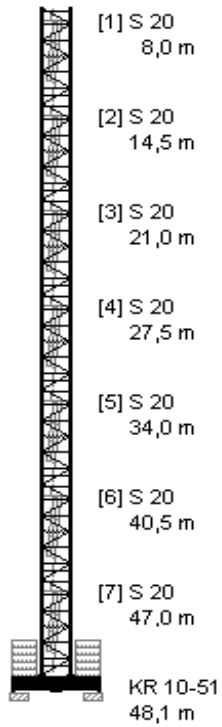
# WILBERT Turmkrane GmbH



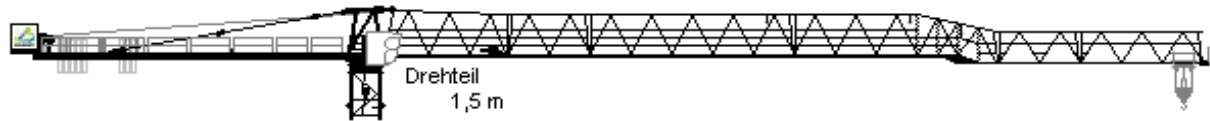
Auslegerlänge 25,0 - 77,5 m

Auslegerlänge 80,0 - 82,5 m

Auslegerlänge 85,0 m



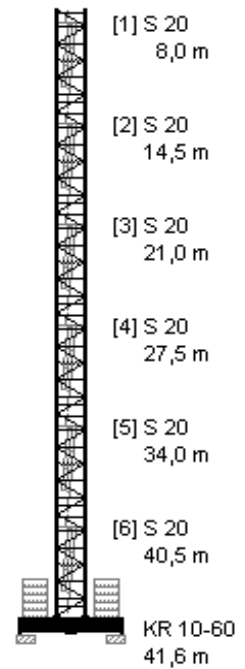
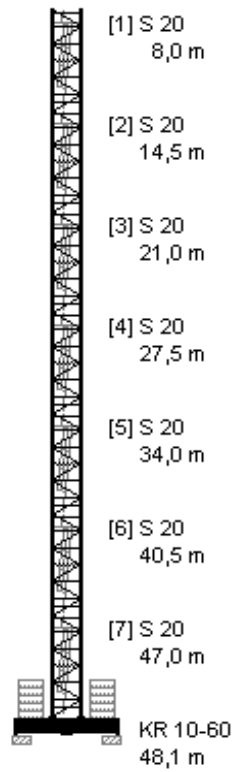
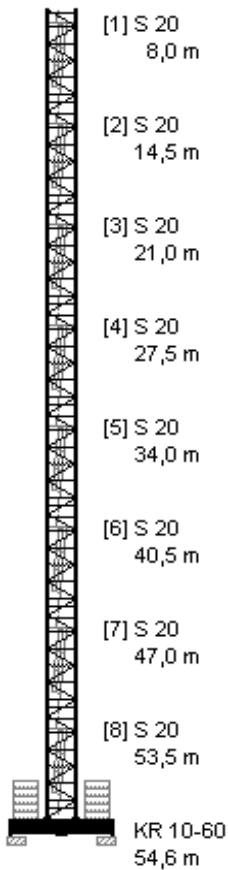
# WILBERT Turmkrane GmbH



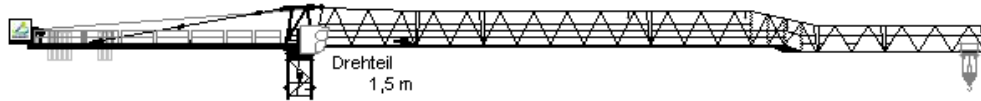
Auslegerlänge 25,0 - 77,5 m

Auslegerlänge 80,0 - 82,5 m

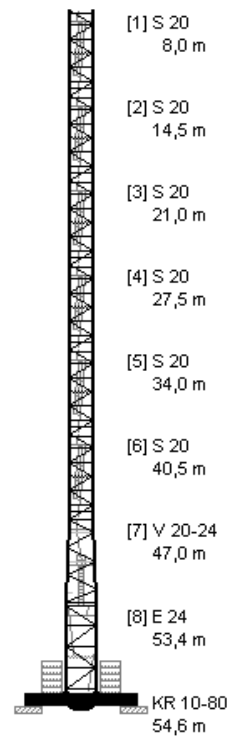
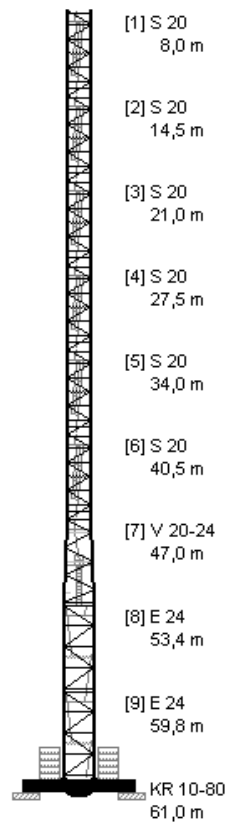
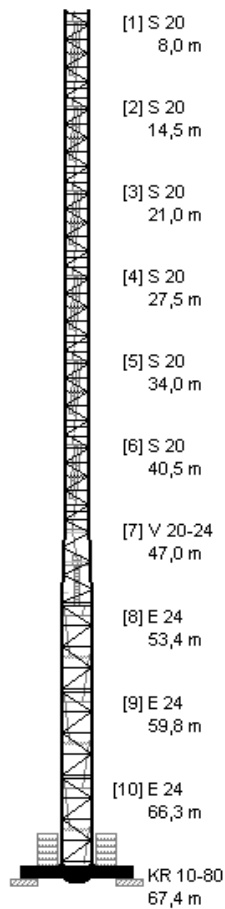
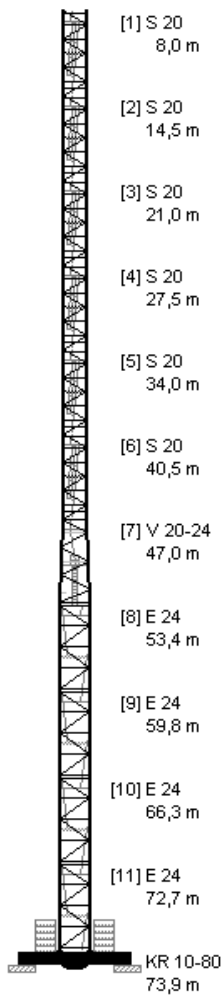
Auslegerlänge 85,0 m



# WILBERT Turmkrane GmbH



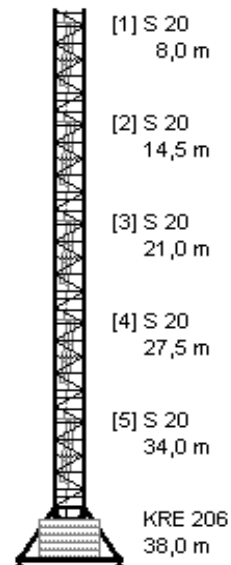
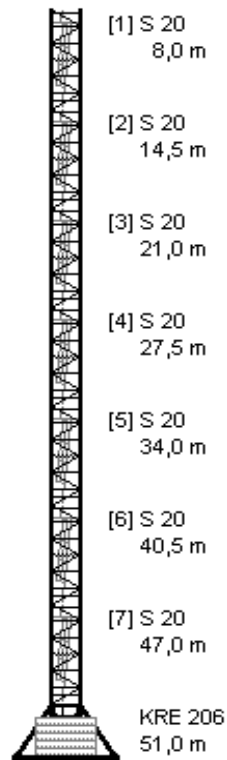
Auslegerlänge 25,0 - 45,0 m    Auslegerlänge 47,5 - 67,5 m    Auslegerlänge 70,0 - 82,5 m    Auslegerlänge 85,0 m





Auslegerlänge 25,0 - 82,5 m

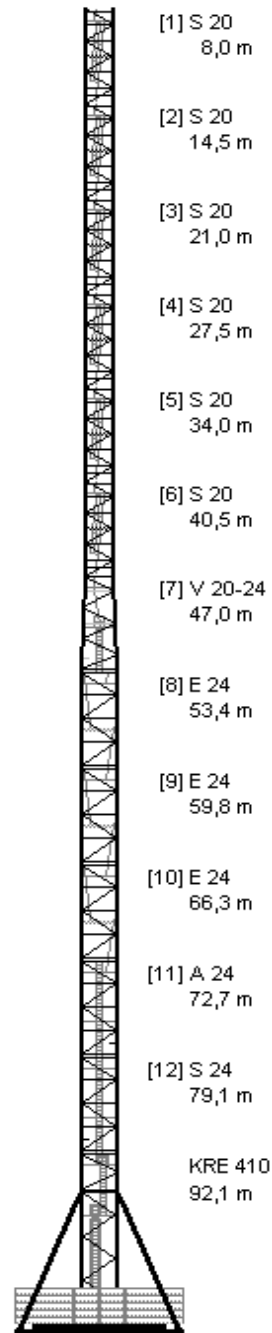
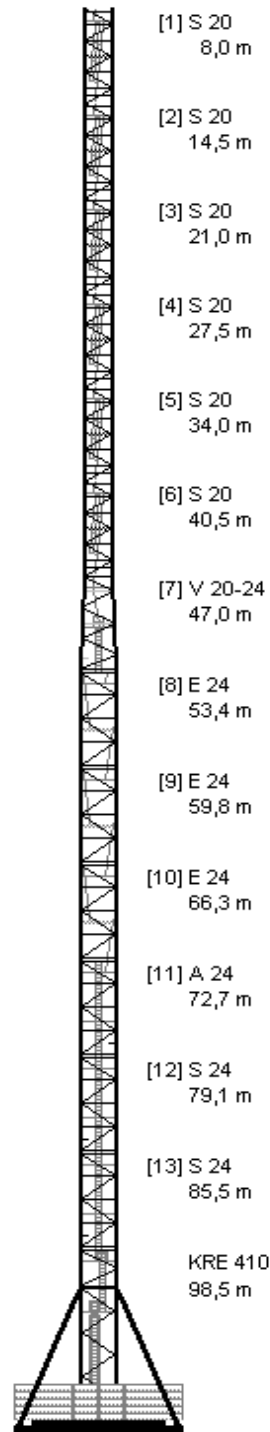
Auslegerlänge 85,0 m





Auslegerlänge 25,0 - 82,5 m

Auslegerlänge 85,0 m





**WILBERT Turmkrane GmbH**

