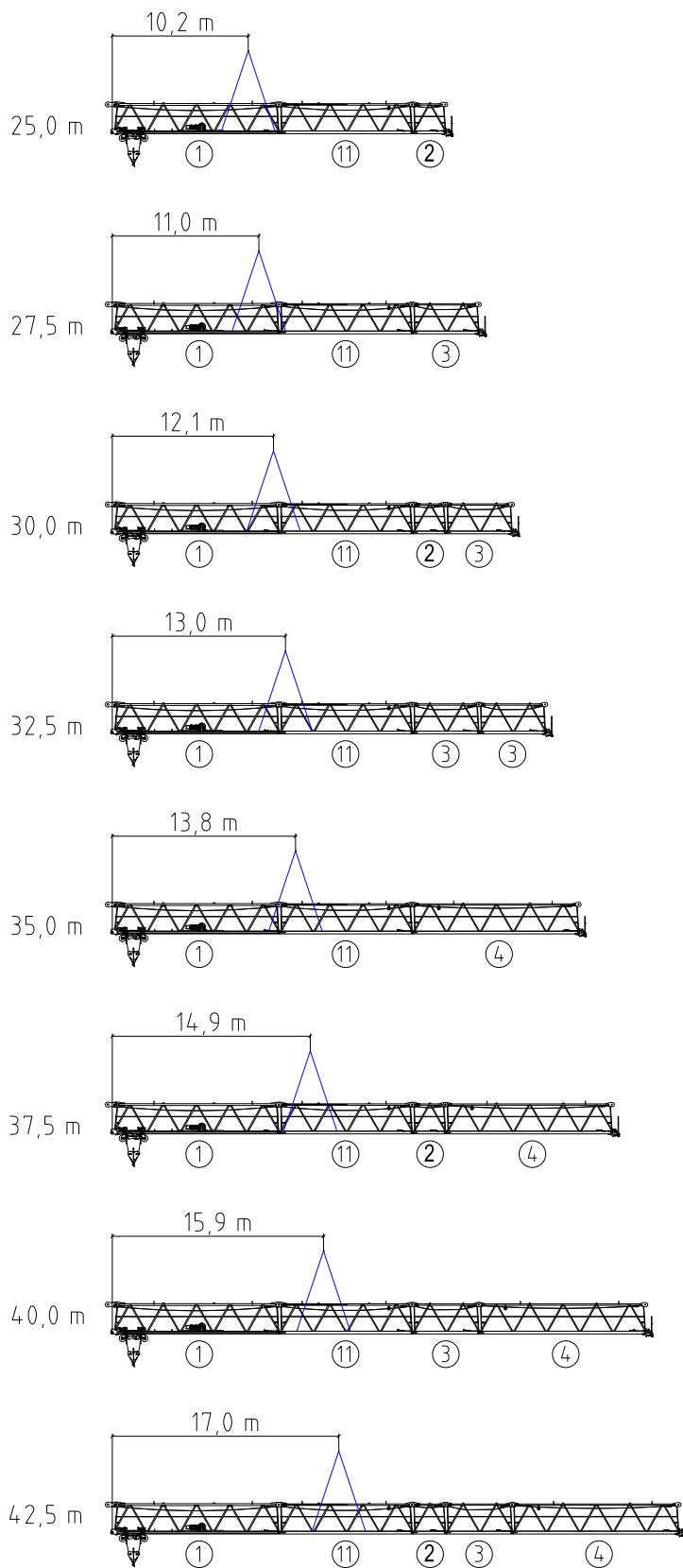


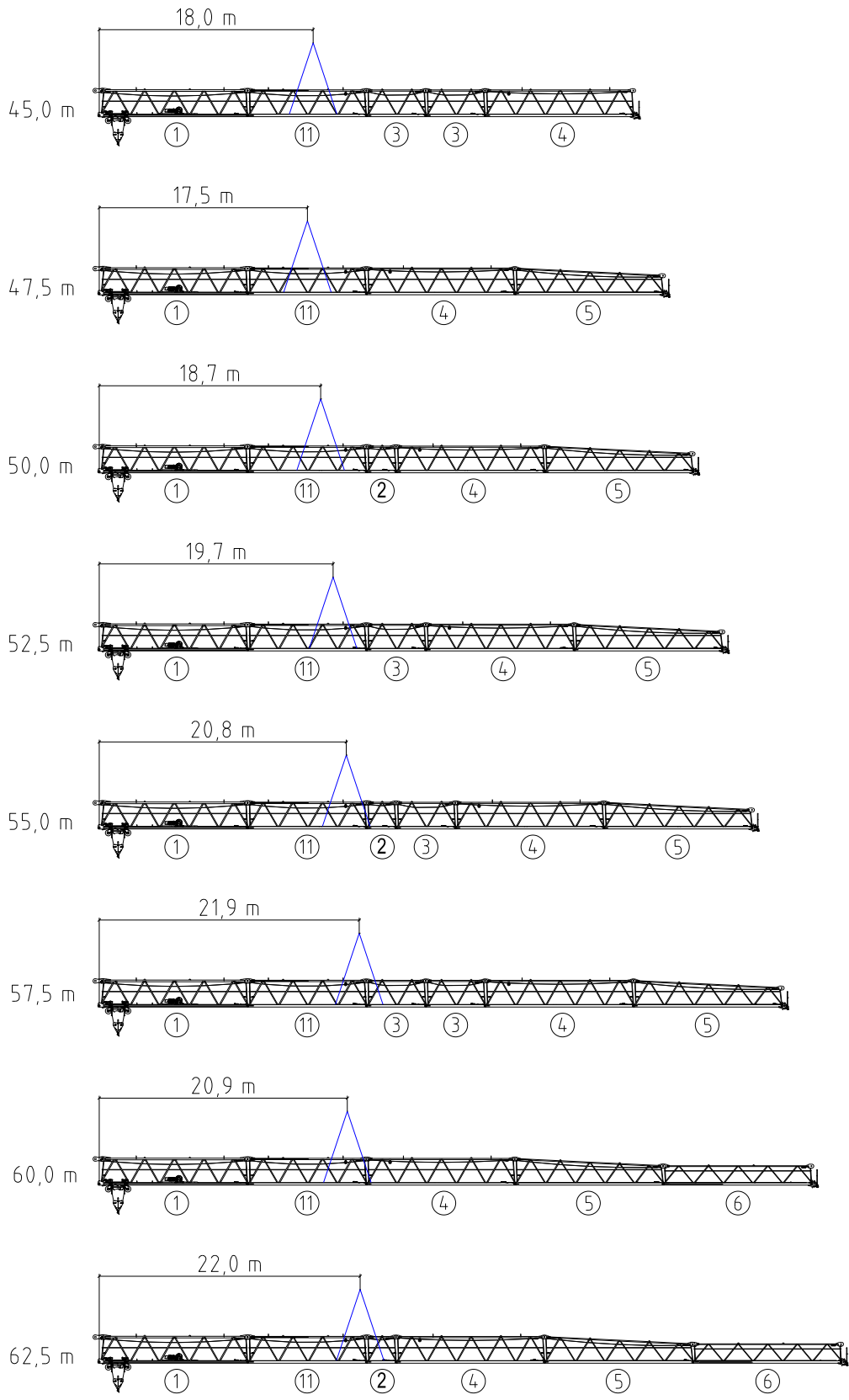
Abb. 1: Anhängpunkte, CAD – Daten nur Richtwerte

Auslegerlänge [m]	Gewicht [kg]	L [m]	S [m]
25,0	11.275	10,2	4,0
27,5	11.815	11,0	4,0
30,0	12.615	12,1	4,0
32,5	13.155	13,0	4,0
35,0	13.435	13,8	4,0
37,5	14.235	14,9	4,0
40,0	14.775	15,9	4,0
42,5	15.575	17,0	4,0
45,0	16.115	18,0	4,0
47,5	15.435	17,5	4,0
50,0	16.235	18,7	4,0
52,5	16.775	19,7	4,0
55,0	17.575	20,8	4,0
57,5	18.115	21,9	4,0
60,0	16.855	20,9	4,0
62,5	17.655	22,0	4,0
65,0	18.195	23,1	4,0
67,5	18.995	24,1	4,0
70,0	18.455	24,0	4,0
72,5	18.995	25,1	4,0
75,0	19.795	26,2	4,0
77,5	20.335	27,3	4,0

Tab. 1: Anhängpunkte, komplette Montage, nur Richtwerte (CAD – Daten)

# WT 360 Anhängepläne





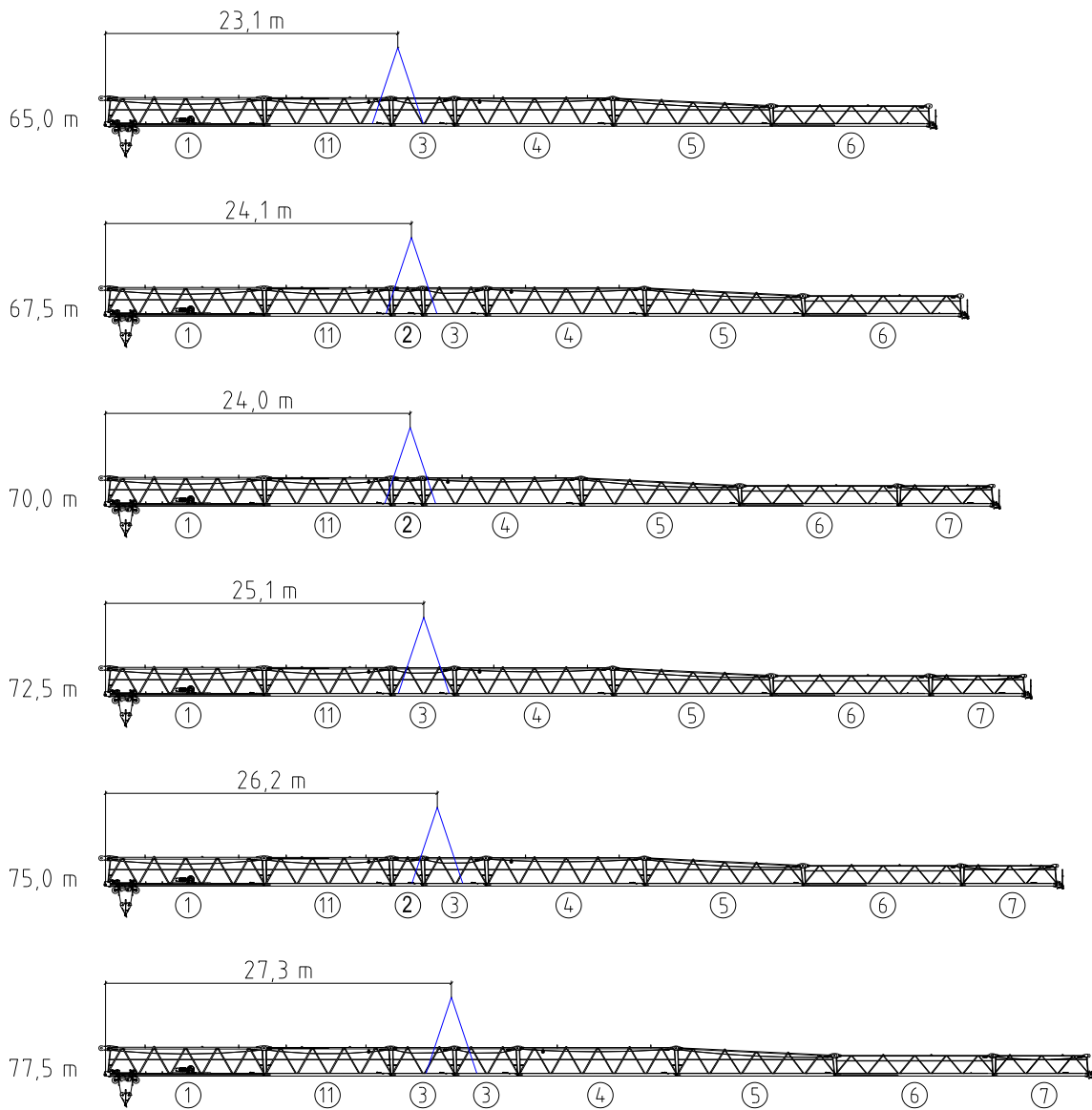


Abb. 2: Anhängpunkte