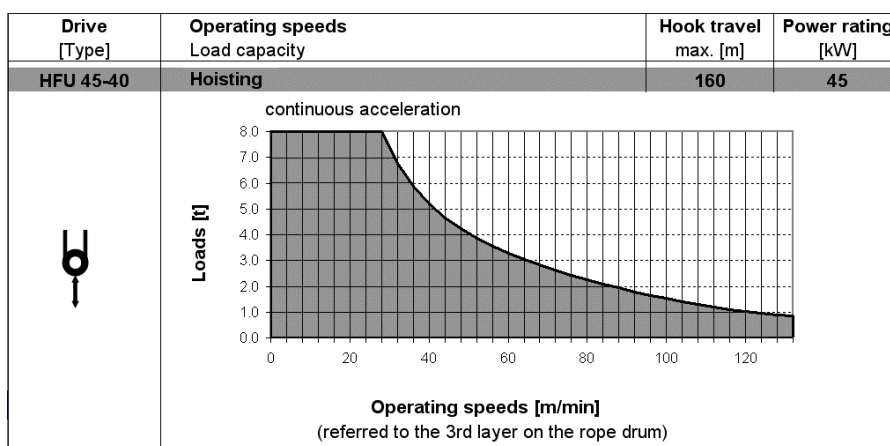


# Wilbert TowerCranes GmbH

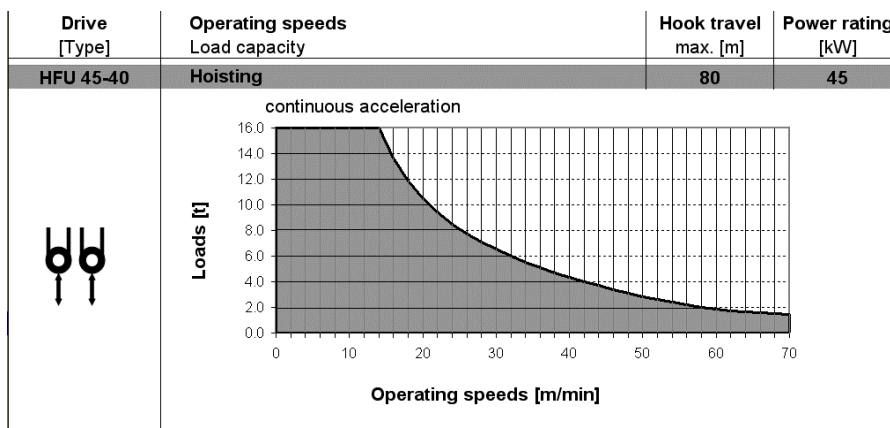
Crane type: WT 420 *e.tronic*

Description: Operating speeds

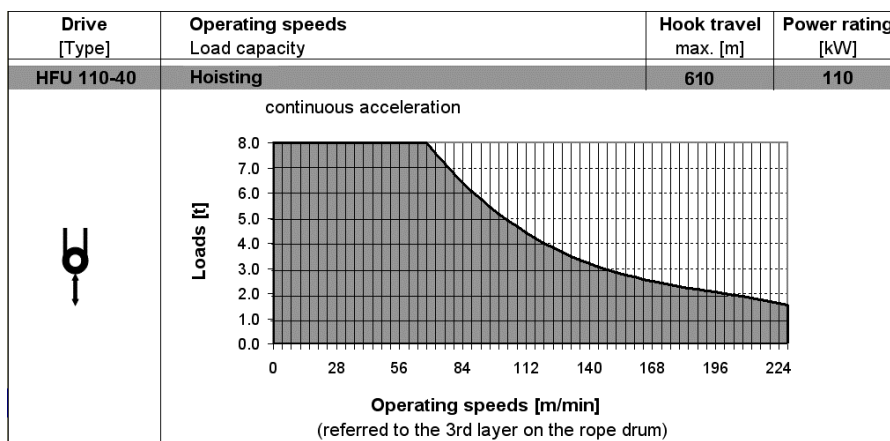
## Hoisting 2- rope fall, 45 kW




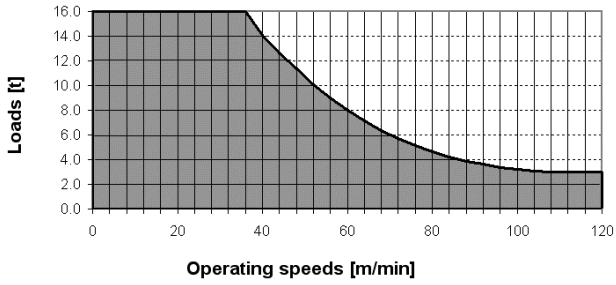
## Hoisting 4- rope fall, 45kW



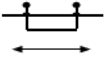
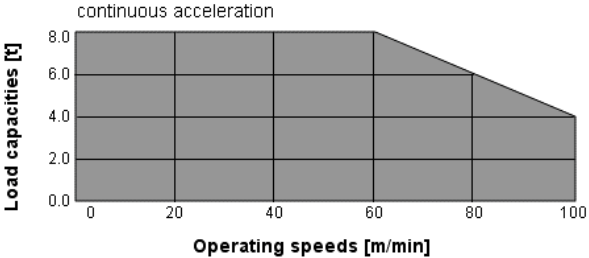
## Hoisting 2-rope fall, 110 kW



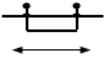
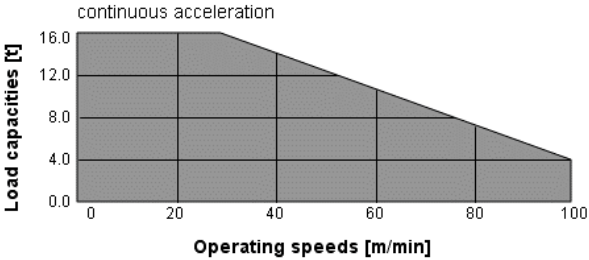
## Hoisting 4-rope fall, 110 kW

Drive [Type]	Operating speeds Load capacity	Hook travel max. [m]	Power rating [kW]
HFU 110-40	Hoisting	305	110
	<p>continuous acceleration</p> 		


## Trolley moving 2-fall rope

Drive [Type]	Operating speeds Load capacity	Power rating [kW]
TD	Moving trolley	9.2
	<p>continuous acceleration</p> 	

## Trolley moving 4-fall rope

Drive [Type]	Operating speeds Load capacity	Power rating [kW]
TD	Moving trolley	9.2
	<p>continuous acceleration</p> 	

## Slewing

Drive [Type]	Operating speeds Load capacity	Power rating [kW]
SD	Slewing	2 x 9.2
	<p>continuous acceleration</p> 